

City Hall

City Hall is a historic 5 story building (4 stories with a basement) located in downtown Duluth. The building currently houses city departments including Human Resources, City Attorney, Engineering, Building Safety & Permits, Parks & Recreation and Parking Enforcement as well as the Mayor's Office and City Council Chambers. There is a high level of public use at this location. The building is connected to adjacent buildings by skyway and tunnel.

Below are highlights of the findings:

Toilet Rooms

Modifications have been made to provide a single-user, accessible toilet room on ground floor and 3rd floor.

Signs

Raised and braille signs are provided throughout the building. There are a number of locations where the signs are currently missing because the function of the space has changed.

Door Width

There are typically double doors into each of the departments from the main corridor. Currently a single leaf of the double doors provides a 27" clear opening. Modify the double doors to provide a single leaf with a 32" clear opening (options include a double door with 1 wide leaf and 1 narrow leaf or providing a single door with an sidelite).

Door Hardware

Currently knob style door hardware is used throughout the interior of the building.

Location JQP # / Item #	Solution / Comments	Qty	Unit Cost	Total Cost	Priority	Estimated Compl. Date	Person Responsible	Actual Compl. Date	Actual Cost
Men's Toilet Room- 1st Floor									
22A2 16907	Install directional signage to the nearest accessible toilet room. MN 1341 1110.2, 1113.10.3.3 <i>Direct to the 3rd floor unisex toilet room.</i>	1	\$50	\$50	1				
Men's Toilet Room- 2nd Floor									
22A2 16900	Install directional signage to the nearest accessible toilet room. MN 1341 1110.2, 1113.10.3.3 <i>Direct to the 3rd floor unisex toilet room.</i>	1	\$50	\$50	1				
Men's Toilet Room- 3rd Floor									
22A2 16870	Install directional signage to the nearest accessible toilet room. MN 1341 1110.2, 1113.10.3.3 <i>Direct to the 3rd floor unisex toilet room.</i>	1	\$50	\$50	1				
Men's Toilet Room- 4th Floor									
22A2 16833	Install directional signage to the nearest accessible toilet room. MN 1341 1110.2, 1113.10.3.3 <i>Direct to the 3rd floor unisex toilet room. Photo 10.</i>	1	\$50	\$50	1				
Men's Toilet Room- Ground Level									
22A2 16954	Install directional signage to the nearest accessible toilet room. MN 1341 1110.2, 1113.10.3.3 <i>Direct to the ground floor unisex toilet room.</i>	1	\$50	\$50	1				

Location JQP # / Item #	Solution / Comments	Qty	Unit Cost	Total Cost	Priority	Estimated Compl. Date	Person Responsible	Actual Compl. Date	Actual Cost
Women's Toilet Room- 1st Floor									
22A2 16914	Install directional signage to the nearest accessible toilet room. MN 1341 1110.2, 1113.10.3.3 <i>Direct to the 3rd floor unisex toilet room.</i>	1	\$50	\$50	1				
Women's Toilet Room- 2nd Floor									
22A2 16878	Install directional signage to the nearest accessible toilet room. MN 1341 1110.2, 1113.10.3.3 <i>Direct to the 3rd floor unisex toilet room.</i>	1	\$50	\$50	1				
Women's Toilet Room- 3rd Floor									
22A2 16839	Install directional signage to the nearest accessible toilet room. MN 1341 1110.2, 1113.10.3.3 <i>Direct to the unisex toilet room on 3rd floor.</i>	1	\$50	\$50	1				
Women's Toilet Room- 4th Floor									
22A2 16806	Install directional signage to the nearest accessible toilet room. MN 1341 1110.2, 1113.10.3.3 <i>Direct to the 3rd floor unisex toilet room. Photo 9.</i>	1	\$50	\$50	1				
Women's Toilet Room- Ground Level									
22A2 16957	Install directional signage to the nearest accessible toilet room. MN 1341 1110.2, 1113.10.3.3 <i>Direct to the ground floor unisex toilet room.</i>	1	\$50	\$50	1				
				Priority # 1 Total	\$500				

City Hall

Accessibility Review

Location JQP # / Item #	Solution / Comments	Qty	Unit Cost	Total Cost	Priority	Estimated Compl. Date	Person Responsible	Actual Compl. Date	Actual Cost
15- Break Room									
20A1 16943	Modify widths of double doors (1 large/1small) to provide a single leaf with a minimum 32" clear opening. ICC / ANSI 404.2.2	1	\$1,500	\$1,500	2				
302- Council Chambers									
20A1 16857	Modify widths of double doors (1 large/1small) to provide a single leaf with a minimum 32" clear opening. ICC / ANSI 404.2.2 <i>A single leaf currently provides a 27 1/2" clear opening.</i>	1	\$1,500	\$1,500	2				
26B 16858	Provide a portable assistive listening system with signage. IBC 1108.2.6	1	\$1,200	\$1,200	2				
26D1 16860	Identify accessible viewing positions. IBC Table 1108.2.2.1 <i>There is currently 1 space designated as accessible. For a seating capacity of 101-300, a minimum of 5 wheelchair positions are required. Photo 6.</i>	1	\$0	\$0	2				
				<i>Location Subtotal:</i>					\$2,700
303- Conference Room									
26B 16856	Provide a portable assistive listening system with signage. IBC 1108.2.6	1	\$1,200	\$1,200	2				
315- Human Resources									
20A1 16851	Modify widths of double doors (1 large/1small) to provide a single leaf with a minimum 32" clear opening. ICC / ANSI 404.2.2	1	\$1,500	\$1,500	2				

Location JQP # / Item #	Solution / Comments	Qty	Unit Cost	Total Cost	Priority	Estimated Compl. Date	Person Responsible	Actual Compl. Date	Actual Cost
330- Clerk									
20A1 16861	Modify widths of double doors (1 large/1small) to provide a single leaf with a minimum 32" clear opening. ICC / ANSI 404.2.2 <i>A single leaf currently provides a 27" opening.</i>	1	\$1,500	\$1,500	2				
4- Parks and Recreation									
20A1 16931	Modify widths of double doors (1 large/1small) to provide a single leaf with a minimum 32" clear opening. ICC / ANSI 404.2.2	1	\$1,500	\$1,500	2				
403- Mayor's Office									
20A1 16825	Modify widths of double doors (1 large/1small) to provide a single leaf with a minimum 32" clear opening. ICC / ANSI 404.2.2 <i>A single leaf currently provides a 28" clear opening. Photo 3.</i>	1	\$1,500	\$1,500	2				
405/407- Mayor's Reception Room									
20A1 16823	Modify widths of double doors (1 large/1small) to provide a single leaf with a minimum 32" clear opening. ICC / ANSI 404.2.2 <i>A single leaf currently provides a 28" clear opening.</i>	2	\$1,500	\$3,000	2				
410- City Attorney									
20A1 16815	Modify widths of double doors (1 large/1small) to provide a single leaf with a minimum 32" clear opening. ICC / ANSI 404.2.2 <i>A single leaf of the double doors currently provides a 27" clear opening.</i>	1	\$1,500	\$1,500	2				

City Hall

Location	Solution / Comments	Qty	Unit Cost	Total Cost	Priority	Estimated Compl. Date	Person Responsible	Actual Compl. Date	Actual Cost
JQP # / Item #									
Men's Toilet Room- 1st Floor									
22-20D 16908	Provide door hardware that does not require grasping, pinching or twisting to operate, such as lever, push pull, etc. ICC / ANSI 404.2.6	1	\$250	\$250	2				
Men's Toilet Room- 2nd Floor									
22-20D 16903	Provide door hardware that does not require grasping, pinching or twisting to operate, such as lever, push pull, etc. ICC / ANSI 404.2.6	1	\$250	\$250	2				
Men's Toilet Room- 3rd Floor									
22-20D 16871	Provide door hardware that does not require grasping, pinching or twisting to operate, such as lever, push pull, etc. ICC / ANSI 404.2.6	1	\$250	\$250	2				
Men's Toilet Room- 4th Floor									
22-20D 16834	Provide door hardware that does not require grasping, pinching or twisting to operate, such as lever, push pull, etc. ICC / ANSI 404.2.6	1	\$250	\$250	2				
Skyway									
20B0 16928	Install an automatic door opener to address non-compliant maneuvering clearance at the door. (Note: Automatic door opener is not required) ICC / ANSI 404.2.3, Table 404.2.3.1 <i>There is not currently a level landing at the skyway doors. Add automatic doors. JQP, Inc. recommends a motion sensor, there is not a location for a button activated door due to the slope. Photo 1.</i>	1	\$2,000	\$2,000	2				

Location	Solution / Comments	Qty	Unit Cost	Total Cost	Priority	Estimated Compl. Date	Person Responsible	Actual Compl. Date	Actual Cost
JQP # / Item #									
Women's Toilet Room- 1st Floor									
22-20D 16916	Provide door hardware that does not require grasping, pinching or twisting to operate, such as lever, push pull, etc. ICC / ANSI 404.2.6	1	\$250	\$250	2				
Women's Toilet Room- 4th Floor									
22-20D 16807	Provide door hardware that does not require grasping, pinching or twisting to operate, such as lever, push pull, etc. ICC / ANSI 404.2.6	1	\$250	\$250	2				
				Priority # 2 Total	\$19,400				

Location JQP # / Item #	Solution / Comments	Qty	Unit Cost	Total Cost	Priority	Estimated Compl. Date	Person Responsible	Actual Compl. Date	Actual Cost
100- Purchasing									
20A1 16924	Modify widths of double doors (1 large/1small) to provide a single leaf with a minimum 32" clear opening. ICC / ANSI 404.2.2	1	\$1,500	\$1,500	3				
101									
20A1 16923	Modify widths of double doors (1 large/1small) to provide a single leaf with a minimum 32" clear opening. ICC / ANSI 404.2.2	1	\$1,500	\$1,500	3				
102									
20A1 16922	Modify widths of double doors (1 large/1small) to provide a single leaf with a minimum 32" clear opening. ICC / ANSI 404.2.2	1	\$1,500	\$1,500	3				
107- Finance and Payroll									
20A1 16927	Modify widths of double doors (1 large/1small) to provide a single leaf with a minimum 32" clear opening. ICC / ANSI 404.2.2	1	\$1,500	\$1,500	3				
14									
15A 16942	Provide fully compliant handrails on both sides of the sloped surface. ICC ANSI 405.8 <i>Photo 2.</i>	34	\$25	\$850	3				
20A1 16941	Modify widths of double doors (1 large/1small) to provide a single leaf with a minimum 32" clear opening. ICC / ANSI 404.2.2	1	\$1,500	\$1,500	3				
				<i>Location Subtotal:</i>					\$2,350

City Hall

Location JQP # / Item #	Solution / Comments	Qty	Unit Cost	Total Cost	Priority	Estimated Compl. Date	Person Responsible	Actual Compl. Date	Actual Cost
16									
20A1 16944	Modify widths of double doors (1 large/1small) to provide a single leaf with a minimum 32" clear opening. ICC / ANSI 404.2.2	1	\$1,500	\$1,500	3				
17									
20A1 16945	Modify widths of double doors (1 large/1small) to provide a single leaf with a minimum 32" clear opening. ICC / ANSI 404.2.2	1	\$1,500	\$1,500	3				
204- GIS									
21A1 16899	Lower a minimum 36" wide section of counter to a maximum height of 36" above the floor. ICC ANSI 904.3 <i>Currently at 45".</i>	1	\$1,000	\$1,000	3				
206- State Auditor									
20A1 16897	Modify widths of double doors (1 large/1small) to provide a single leaf with a minimum 32" clear opening. ICC / ANSI 404.2.2	1	\$1,500	\$1,500	3				
208- Planning Division									
20A1 16893	Modify widths of double doors (1 large/1small) to provide a single leaf with a minimum 32" clear opening. ICC / ANSI 404.2.2	1	\$1,500	\$1,500	3				

Location	Solution / Comments	Qty	Unit Cost	Total Cost	Priority	Estimated Compl. Date	Person Responsible	Actual Compl. Date	Actual Cost
JQP # / Item #									
210- Building Safety and Permits									
20A1	16891	1	\$1,500	\$1,500	3				
	Modify widths of double doors (1 large/1small) to provide a single leaf with a minimum 32" clear opening. ICC / ANSI 404.2.2								
211- Engineering									
20A1	16885	1	\$1,500	\$1,500	3				
	Modify widths of double doors (1 large/1small) to provide a single leaf with a minimum 32" clear opening. ICC / ANSI 404.2.2 <i>A single leaf currently provides a 27 1/2" clear opening.</i>								
303- Conference Room									
20A1	16855	1	\$1,500	\$1,500	3				
	Modify widths of double doors (1 large/1small) to provide a single leaf with a minimum 32" clear opening. ICC / ANSI 404.2.2 <i>A single leaf currently provides a 27 1/2" clear opening.</i>								
319									
14G1	16850	1	\$200	\$200	3				
	Eliminate protruding hazard by installing end panels or other object to direct a person with visual impairments using proper cane technique around the potential hazard. ICC / ANSI 307.1 <i>The shelf currently protrudes 5" at a height of 49 1/2".</i>								
326									
20A1	16865	1	\$1,500	\$1,500	3				
	Modify widths of double doors (1 large/1small) to provide a single leaf with a minimum 32" clear opening. ICC / ANSI 404.2.2								

Location JQP # / Item #	Solution / Comments	Qty	Unit Cost	Total Cost	Priority	Estimated Compl. Date	Person Responsible	Actual Compl. Date	Actual Cost
328/329- PACT TV									
20A1 16862	Modify widths of double doors (1 large/1small) to provide a single leaf with a minimum 32" clear opening. ICC / ANSI 404.2.2 <i>Currently provides a 27" clear opening.</i>	1	\$1,500	\$1,500	3				
402- Administrative Assistant									
20A1 16829	Modify widths of double doors (1 large/1small) to provide a single leaf with a minimum 32" clear opening. ICC / ANSI 404.2.2 <i>A single leaf currently provides a 28" clear opening.</i>	1	\$1,500	\$1,500	3				
21A1 16830	Lower a minimum 36" wide section of counter to a maximum height of 36" above the floor. ICC ANSI 904.3 <i>Currently at 40".</i>	1	\$1,000	\$1,000	3				
				<i>Location Subtotal:</i>					\$2,500
403- Mayor's Office									
21A1 16828	Lower a minimum 36" wide section of counter to a maximum height of 36" above the floor. ICC ANSI 904.3 <i>Currently at 40".</i>	1	\$1,000	\$1,000	3				
405/407- Mayor's Reception Room									
261 16824	Provide a podium that is useable from a seated position. Issues for consideration include site line and use of a microphone.	1	\$500	\$500	3				

Location JQP # / Item #	Solution / Comments	Qty	Unit Cost	Total Cost	Priority	Estimated Compl. Date	Person Responsible	Actual Compl. Date	Actual Cost
407- Community Development									
20A1 16820	Modify widths of double doors (1 large/1small) to provide a single leaf with a minimum 32" clear opening. ICC / ANSI 404.2.2 <i>A single leaf of the double doors curently provides a 27" clear opening.</i>	1	\$1,500	\$1,500	3				
410- City Attorney									
14G1 16816	Eliminate protruding hazard by installing end panels or other object to direct a person with visual impairments using proper cane technique around the potential hazard. ICC / ANSI 307.1 <i>The in-box currently protrudes 15" at a height of 48".</i>	1	\$200	\$200	3				
21A1 16817	Lower a minimum 36" wide section of counter to a maximum height of 36" above the floor. ICC ANSI 904.3 <i>Currently at 40". Photo 4.</i>	1	\$1,000	\$1,000	3				
				<i>Location Subtotal:</i>					\$1,200
410- City Attorney- Human Rights Office									
21A1 16818	Lower a minimum 36" wide section of counter to a maximum height of 36" above the floor. ICC ANSI 904.3 <i>Currently at 40".</i>	1	\$1,000	\$1,000	3				
Building Wide									
20D 16805	Provide door hardware that does not require grasping, pinching or twisting to operate, such as lever. ICC / ANSI 404.2.6 <i>Photo 3.</i>	185	\$250	\$46,250	3				
40B 16804	Provide compliant raised and Braille permanent room identification signage. MN 1341 1110.2 <i>Raised and braille sings are provided throughout the building, however multiple signs are currently missing or the space has changed uses and the sign is no longer accurate.</i>	1	\$40	\$40	3				
				<i>Location Subtotal:</i>					\$46,290

Location JQP # / Item #	Solution / Comments	Qty	Unit Cost	Total Cost	Priority	Estimated Compl. Date	Person Responsible	Actual Compl. Date	Actual Cost
Exterior Entry- 2nd Street									
12G2 16926	Relocate automatic door opener push plate so it is mounted between 30" and 36" above the finished floor (measured to the top of the switch) and positioned to provide a 30" x 48" clear floor space centered on the switch and beyond the arc of the door swing. MN1341 404.3.5.2	1	\$400	\$400	3				
Ground Floor- Corridor									
14G1 16940	Eliminate protruding hazard by installing end panels or other object to direct a person with visual impairments using proper cane technique around the potential hazard. ICC / ANSI 307.1 <i>The display case currently protrudes 13" at a height of 29".</i>	1	\$200	\$200	3				
Men's Toilet Room- 3rd Floor									
22-20A 16869	Widen door opening to provide a minimum 32" clear opening. ICC / ANSI 404.2.2 <i>Currently provides a 29" clear opening.</i>	1	\$1,500	\$1,500	3				
22Q 16872	Insulate or otherwise protect exposed pipes at lavatory. ICC / ANSI 606.6	1	\$50	\$50	3				
22V 16873	Install a full-height mirror or provide a mirror where the bottom of the reflective surface is no higher than 40" above the floor. MN 1341 603.3 <i>Currently at 49".</i>	1	\$300	\$300	3				
				<i>Location Subtotal:</i>					\$1,850

Location JQP # / Item #	Solution / Comments	Qty	Unit Cost	Total Cost	Priority	Estimated Compl. Date	Person Responsible	Actual Compl. Date	Actual Cost
Men's Toilet Room- 4th Floor									
22-20A 16968	Widen door opening to provide a minimum 32" clear opening. ICC / ANSI 404.2.2	1	\$1,500	\$1,500	3				
22Q 16835	Insulate or otherwise protect exposed pipes at lavatory. ICC / ANSI 606.6	1	\$50	\$50	3				
22T 16837	Lower the towel dispenser/dryer so the highest operable part is no higher than 48" (44" maximum if located above lavatory or counter). ANSI 308 <i>Currently at 57".</i>	1	\$50	\$50	3				
22V 16836	Install a full-height mirror or provide a mirror where the bottom of the reflective surface is no higher than 40" above the floor. MN 1341 603.3 <i>Currently at 49".</i>	1	\$300	\$300	3				
				<i>Location Subtotal:</i>					\$1,900
Mother's Room- 2nd Floor									
20D 16876	Provide door hardware that does not require grasping, pinching or twisting to operate, such as lever. ICC / ANSI 404.2.6	1	\$250	\$250	3				
Parking Enforcement									
14F 16962	Lower object(s) so the highest operable part is no higher than 48". ICC / ANSI 308 <i>The slot of the pay box is currently at 56". Photo 7.</i>	1	\$50	\$50	3				
14G2 16963	Remove, relocate or replace object so it is not a protruding object for persons with visual impairments. ICC / ANSI 307.1 <i>The pay box currently protrudes 8" at a height of 41". (Cost already calculated.) Photo 7.</i>	1	\$0	\$0	3				

Location JQP # / Item #	Solution / Comments	Qty	Unit Cost	Total Cost	Priority	Estimated Compl. Date	Person Responsible	Actual Compl. Date	Actual Cost
Tunnel to Courthouse									
20A1 16949	Modify widths of double doors (1 large/1small) to provide a single leaf with a minimum 32" clear opening. ICC / ANSI 404.2.2	1	\$1,500	\$1,500	3				
Unisex Toilet Room- Ground Level									
22Z 16950	Provide a coat hook positioned so the highest operable part is no higher than 48". ICC / ANSI 604.11 Currently at 60".	1	\$50	\$50	3				
Women's Toilet Room- 2nd Floor									
22B1 16879	Relocate compliant sign to the wall adjacent to latch side of door, 48" minimum to the baseline of the lowest Braille characters and 60" maximum to the baseline of the highest tactile character. ICC/ANSI 703.3.10, 703.4.5	1	\$40	\$40	3				
22H1 16882	Provide staple style pulls on both sides of the accessible stall door near the latch. ANSI 604.8.3	1	\$50	\$50	3				
22K (MN) 16881	Install compliant grab bars on the side and rear walls of the water closet. MN 1341 604.5.1 ANSI 604.5.2	1	\$400	\$400	3				
22Z 16883	Provide a coat hook positioned so the highest operable part is no higher than 48". ICC / ANSI 604.11	1	\$50	\$50	3				
				<i>Location Subtotal:</i>					\$540

Location	Solution / Comments	Qty	Unit Cost	Total Cost	Priority	Estimated Compl. Date	Person Responsible	Actual Compl. Date	Actual Cost
JQP # / Item #									
Women's Toilet Room- 3rd Floor									
22-20A	16847	Widen door opening to provide a minimum 32" clear opening. ICC / ANSI 404.2.2 <i>Currently provides a 29" clear opening.</i>	1	\$1,500	\$1,500	3			
22K6 (MN)	16843	Remove the existing grab bar configuration and replace with a compliant grab bar configuration. MN 1341 604.5.1 ANSI 604.5.2	1	\$400	\$400	3			
22L (MN)	16840	Reposition the toilet paper dispenser so it is located below the horizontal grab bar. Operable parts should be located within an area 12" - 40" from the rear wall, and 18" minimum above the floor and 1 1/2" minimum below the horizontal grab bar. MN 1341 604.7	1	\$50	\$50	3			
22R	16845	Replace the existing lavatory faucet with hardware that does not require grasping, pinching or twisting to operate. ICC / ANSI 309.4, 606.4	1	\$450	\$450	3			
22T	16846	Lower the towel dispenser/dryer so the highest operable part is no higher than 48" (44" maximum if located above lavatory or counter). ANSI 308 <i>Currently at 56".</i>	1	\$50	\$50	3			
22W2	16841	Relocate the sanitary product receptacle in the accessible stall. The sanitary product receptacle should be located 1 1/2" minimum below the horizontal grab bar and 18" minimum above the floor and 12"- 40" from the rear wall. MN 1341 604.7	1	\$50	\$50	3			
				<i>Location Subtotal:</i>					\$2,500

Location JQP # / Item #	Solution / Comments	Qty	Unit Cost	Total Cost	Priority	Estimated Compl. Date	Person Responsible	Actual Compl. Date	Actual Cost
Women's Toilet Room- 4th Floor									
22-20A 16808	Widen door opening to provide a minimum 32" clear opening. ICC / ANSI 404.2.2 <i>Currently provides 29" clear opening.</i>	1	\$1,500	\$1,500	3				
22-20B1 16814	Remove / relocate / replace moveable object to provide needed maneuvering clearance on the pull side of the door. ICC / ANSI 404.2.3, Table 404.2.3.1 <i>The table currently obstructs the pull approach at the door.</i>	1	\$50	\$50	3				
22Q 16811	Insulate or otherwise protect exposed pipes at lavatory. ICC / ANSI 606.6	1	\$50	\$50	3				
22R 16812	Replace the existing lavatory faucet with hardware that does not require grasping, pinching or twisting to operate. ICC / ANSI 309.4, 606.4	1	\$450	\$450	3				
22T 16810	Lower the towel dispenser/dryer so the highest operable part is no higher than 48" (44" maximum if located above lavatory or counter). ANSI 308 <i>Currently at 58".</i>	1	\$50	\$50	3				
22W 16809	Lower the product dispenser(s) so the highest operable part is no higher than 48". ANSI 308 <i>Currently at 59".</i>	1	\$50	\$50	3				
				<i>Location Subtotal:</i>					\$2,150
				Priority # 3 Total					\$88,430

City Hall

Location JQP # / Item #	Solution / Comments	Qty	Unit Cost	Total Cost	Priority	Estimated Compl. Date	Person Responsible	Actual Compl. Date	Actual Cost
102B									
27B	16921 Modify / replace sink and / or counter so rim is no higher than 34". ICC / ANSI 606.3 <i>Currently at 40".</i>	1	\$1,000	\$1,000	4				
103-1									
20A	16905 Widen door opening to provide a minimum 32" clear opening. ICC / ANSI 404.2.2 <i>Currently provides 29 1/2" clear opening.</i>	1	\$1,500	\$1,500	4				
104									
20A	16920 Widen door opening to provide a minimum 32" clear opening. ICC / ANSI 404.2.2 <i>The former Chief's office provides a 29" clear opening.</i>	1	\$1,500	\$1,500	4				
20A	16919 Widen door opening to provide a minimum 32" clear opening. ICC / ANSI 404.2.2 <i>The doors to the vault currently provide a 29" clear opening.</i>	2	\$1,500	\$3,000	4				
				<i>Location Subtotal:</i>	\$4,500				
106A- Conference Room									
20B	16912 Re-hinge / relocate door to provide needed maneuvering clearance on the latch pull side of the door. ICC / ANSI 404.2.3, Table 404.2.3.1 <i>Currently provides 4".</i>	1	\$400	\$400	4				
107C (Adjacent to Women's Toilet Room)									
20A	16913 Widen door opening to provide a minimum 32" clear opening. ICC / ANSI 404.2.2	1	\$1,500	\$1,500	4				

Location JQP # / Item #	Solution / Comments	Qty	Unit Cost	Total Cost	Priority	Estimated Compl. Date	Person Responsible	Actual Compl. Date	Actual Cost
108- Assessor									
20A 16925	Widen door opening to provide a minimum 32" clear opening. ICC / ANSI 404.2.2 <i>The interior office door currently provides a 29" clear opening.</i>	1	\$1,500	\$1,500	4				
110									
20B 16918	Re-hinge / relocate door to provide needed maneuvering clearance on the latch pull side of the door. ICC / ANSI 404.2.3, Table 404.2.3.1 <i>Currently provides a 10 1/2".</i>	1	\$400	\$400	4				
204- GIS									
20B 16898	Re-hinge / relocate door to provide needed maneuvering clearance on the latch pull side of the door. ICC / ANSI 404.2.3, Table 404.2.3.1 <i>Currently provides 1".</i>	1	\$400	\$400	4				
207- Conference Room									
20A1 16895	Modify widths of double doors (1 large/1small) to provide a single leaf with a minimum 32" clear opening. ICC / ANSI 404.2.2 <i>(from 208)</i>	1	\$1,500	\$1,500	4				
20B 16896	Re-hinge / relocate door to provide needed maneuvering clearance on the latch pull side of the door. ICC / ANSI 404.2.3, Table 404.2.3.1 <i>Currently provides 8".</i>	1	\$400	\$400	4				
				<i>Location Subtotal:</i>	\$1,900				

City Hall

Location JQP # / Item #	Solution / Comments	Qty	Unit Cost	Total Cost	Priority	Estimated Compl. Date	Person Responsible	Actual Compl. Date	Actual Cost
208- Planning Division									
21A1 16894	Lower a minimum 36" wide section of counter to a maximum height of 36" above the floor. ICC ANSI 904.3	1	\$1,000	\$1,000	4				
210- Building Safety and Permits Storage									
20A 16892	Widen door opening to provide a minimum 32" clear opening. ICC / ANSI 404.2.2 <i>Currently provides a 29" clear opening.</i>	1	\$1,500	\$1,500	4				
210A- MIS									
14E1 16890	Remove / relocate / modify object to provide a minimum clear width of 36". ICC / ANSI 403.5 <i>The route to the cubicles is reduced to 31" for a distance of 7'-3" and 34" for a distance of 9'-4".</i>	2	\$2,000	\$4,000	4				
15A 16889	Provide fully compliant handrails on both sides of the sloped surface. ICC ANSI 405.8 <i>At the ramp to the data room.</i>	10	\$25	\$250	4				
				<i>Location Subtotal:</i>					\$4,250
211- Engineering									
14E1 16888	Remove / relocate / modify object to provide a minimum clear width of 36". ICC / ANSI 403.5 <i>The route to the cubicles is reduced to 30 1/2" for a distance of 48".</i>	1	\$2,000	\$2,000	4				
20A 16886	Widen door opening to provide a minimum 32" clear opening. ICC / ANSI 404.2.2 <i>The door to the vault (currently used for storage) provides a 27 1/2" clear opening.</i>	1	\$1,500	\$1,500	4				
27B 16887	Modify / replace sink and / or counter so rim is no higher than 34". ICC / ANSI 606.3 <i>The sink in the print room is currently at 36".</i>	1	\$1,000	\$1,000	4				
				<i>Location Subtotal:</i>					\$4,500

Location JQP # / Item #	Solution / Comments	Qty	Unit Cost	Total Cost	Priority	Estimated Compl. Date	Person Responsible	Actual Compl. Date	Actual Cost
302- Council Chambers									
150 16859	Modify bottom landing to be larger. ICC / ANSI 405.7 <i>There is not currently a level landing at the bottom of the ramp from the double doors at 301 to the raised council member stage. Note: the accessible route to the council member stage requires leaving the council chambers and entering from the corridor. Photo 5.</i>	1	\$10,000	\$10,000	4				
309- Human Resources Private Office									
20A 16853	Widen door opening to provide a minimum 32" clear opening. ICC / ANSI 404.2.2 <i>Currently provides 29" clear opening.</i>	1	\$1,500	\$1,500	4				
310- Human Resources									
20B 16854	Re-hinge / relocate door to provide needed maneuvering clearance on the latch pull side of the door. ICC / ANSI 404.2.3, Table 404.2.3.1 <i>Currently provides 5".</i>	1	\$400	\$400	4				
314- Human Resources (Secure Entry)									
20B 16852	Re-hinge / relocate door to provide needed maneuvering clearance on the latch pull side of the door. ICC / ANSI 404.2.3, Table 404.2.3.1	1	\$400	\$400	4				

Location JQP # / Item #	Solution / Comments	Qty	Unit Cost	Total Cost	Priority	Estimated Compl. Date	Person Responsible	Actual Compl. Date	Actual Cost
318- Department of Public Administration									
20P 16848	Lower the window in the door (or the sidelite) so the bottom is at 43" maximum. ICC / ANSI 404.2.10 <i>Currently 2 at 59" and 1 at 48".</i>	3	\$250	\$750	4				
22-20B 16849	Re-hinge / relocate door to provide needed maneuvering clearance on the latch pull side of the door. ICC / ANSI 404.2.3, Table 404.2.3.1 <i>Currently provides 6".</i>	1	\$750	\$750	4				
				<i>Location Subtotal:</i>					\$1,500
324- Offices									
20A 16867	Widen door opening to provide a minimum 32" clear opening. ICC / ANSI 404.2.2 <i>A single leaf currently provides a 29" clear opening.</i>	6	\$1,500	\$9,000	4				
324- Studio									
20B 16866	Re-hinge / relocate door to provide needed maneuvering clearance on the latch pull side of the door. ICC / ANSI 404.2.3, Table 404.2.3.1 <i>Currently provides 2".</i>	1	\$400	\$400	4				
328/329- PACT TV									
20A 16863	Widen door opening to provide a minimum 32" clear opening. ICC / ANSI 404.2.2 <i>Communicating door.</i>	1	\$1,500	\$1,500	4				
20B 16864	Re-hinge / relocate door to provide needed maneuvering clearance on the latch pull side of the door. ICC / ANSI 404.2.3, Table 404.2.3.1 <i>There is not maneuvering clearance at the 2 private offices.</i>	2	\$400	\$800	4				
				<i>Location Subtotal:</i>					\$2,300

Location JQP # / Item #	Solution / Comments	Qty	Unit Cost	Total Cost	Priority	Estimated Compl. Date	Person Responsible	Actual Compl. Date	Actual Cost
4- Parks and Recreation Toilet Room									
22	16933 Enlarge and upgrade the toilet room to be fully accessible. IBC 1109.2	1	\$10,000	\$10,000	4				
22B	16932 Install signage with appropriate raised and Braille lettering. MN 1341 1110.2	1	\$40	\$40	4				
				<i>Location Subtotal:</i>					\$10,040
400- Staff Entry									
20A1	16831 Modify widths of double doors (1 large/1small) to provide a single leaf with a minimum 32" clear opening. ICC / ANSI 404.2.2	1	\$1,500	\$1,500	4				
400- Staff Private Office									
20B	16832 Re-hinge / relocate door to provide needed maneuvering clearance on the latch pull side of the door. ICC / ANSI 404.2.3, Table 404.2.3.1	1	\$400	\$400	4				
403- Mayor's Office Kitchenette									
20A	16827 Widen door opening to provide a minimum 32" clear opening. ICC / ANSI 404.2.2 <i>Currently provides 1 door with a 28" clear opening and 1 with a 29" clear opening.</i>	2	\$1,500	\$3,000	4				
25J1.1	16826 Modify height of sink counter to 34" maximum. ANSI 804.4 <i>Currently at 36".</i>	1	\$1,000	\$1,000	4				
				<i>Location Subtotal:</i>					\$4,000

Location JQP # / Item #	Solution / Comments	Qty	Unit Cost	Total Cost	Priority	Estimated Compl. Date	Person Responsible	Actual Compl. Date	Actual Cost
407- Community Development									
14F4 16821	Provide a closet rod mounted no higher than 48" above the floor. ICC / ANSI 308 <i>The coat rack is currently at 65".</i>	1	\$100	\$100	4				
20A 16822	Widen door opening to provide a minimum 32" clear opening. ICC / ANSI 404.2.2 <i>The private office of 'Keith Hamre' currently provides a 29" clear opening.</i>	1	\$1,500	\$1,500	4				
				<i>Location Subtotal:</i>					\$1,600
410- City Attorney Kitchenette									
20A 16819	Widen door opening to provide a minimum 32" clear opening. ICC / ANSI 404.2.2 <i>Currently provides 27".</i>	2	\$1,500	\$3,000	4				
4C									
20B 16934	Re-hinge / relocate door to provide needed maneuvering clearance on the latch pull side of the door. ICC / ANSI 404.2.3, Table 404.2.3.1 <i>Currently provides 4 1/2".</i>	1	\$400	\$400	4				
6- Kitchenette									
20B 16937	Re-hinge / relocate door to provide needed maneuvering clearance on the latch pull side of the door. ICC / ANSI 404.2.3, Table 404.2.3.1 <i>Currently provides 6".</i>	1	\$400	\$400	4				
25J1.1 16936	Modify height of sink counter to 34" maximum. ANSI 804.4 <i>Currently at 36".</i>	1	\$1,000	\$1,000	4				
				<i>Location Subtotal:</i>					\$1,400

Location JQP # / Item #	Solution / Comments	Qty	Unit Cost	Total Cost	Priority	Estimated Compl. Date	Person Responsible	Actual Compl. Date	Actual Cost
6A- Storage									
20A 16938	Widen door opening to provide a minimum 32" clear opening. ICC / ANSI 404.2.2 <i>Currently provides 29".</i>	1	\$1,500	\$1,500	4				
7- Park's Manager									
20A 16939	Widen door opening to provide a minimum 32" clear opening. ICC / ANSI 404.2.2 <i>The vault currently provides a 29 1/2" clear opening.</i>	1	\$1,500	\$1,500	4				
Bike Storage (future)									
25J1.1 16953	Modify height of sink counter to 34" maximum. ANSI 804.4	1	\$1,000	\$1,000	4				
Boiler Room									
20A1 16952	Modify widths of double doors (1 large/1small) to provide a single leaf with a minimum 32" clear opening. ICC / ANSI 404.2.2	1	\$1,500	\$1,500	4				
Building Wide									
46A1 16803	Replace frosted cover with a clear cover. (Cost unknown.) ICC / ANSI 702.1	1	\$0	\$0	4				

Location JQP # / Item #	Solution / Comments	Qty	Unit Cost	Total Cost	Priority	Estimated Compl. Date	Person Responsible	Actual Compl. Date	Actual Cost
Custodial Office- Ground Level									
20B 16948	Re-hinge / relocate door to provide needed maneuvering clearance on the latch pull side of the door. ICC / ANSI 404.2.3, Table 404.2.3.1	1	\$400	\$400	4				
Drinking Fountains									
41A1 16969	Provide a minimum of one drinking fountain that has a 36" spout height accessible for persons using wheelchairs (low) and one standard height (high) drinking fountain with a spout height 38" minimum and 43" maximum for persons who have difficulty bending or stooping. ANSI 602.4	5	\$1,500	\$7,500	4				
Exterior Entry- 4th Avenue									
121 16959	Relocate or remove one door to provide a larger vestibule. ICC / ANSI 404.2.5 <i>Currently provides 36".</i>	1	\$1,500	\$1,500	4				
Former Men's Locker Room									
24 16946	Provide a fully compliant unisex toilet/shower room. IBC 1109.2 <i>The former men's locker room is currently abandoned.</i>	1	\$0	\$0	4				

Location	Solution / Comments	Qty	Unit Cost	Total Cost	Priority	Estimated Compl. Date	Person Responsible	Actual Compl. Date	Actual Cost
JQP # / Item #									
Men's Toilet Room- 1st Floor									
22-20A	16909	Widen door opening to provide a minimum 32" clear opening. ICC / ANSI 404.2.2 <i>Currently provides 29" clear openings.</i>	2	\$1,500	\$3,000	4			
22-20B	16910	Re-hinge / relocate door to provide needed maneuvering clearance on the latch pull side of the door. ICC / ANSI 404.2.3, Table 404.2.3.1	1	\$750	\$750	4			
22E3	16911	Create a fully compliant 60" minimum wide toilet stall by combining two existing stalls and removing one toilet. Ensure that the new stall provides 48" minimum in front of the toilet, side and rear grab bars, toilet paper dispenser located below the horizontal grab bar, a low coat hook, easily operable stall locking hardware and staple style pulls on both sides of the stall door. MN 1341 604.3.1	1	\$1,350	\$1,350	4			
				<i>Location Subtotal:</i>		\$5,100			
Men's Toilet Room- 2nd Floor									
22-20A	16901	Widen door opening to provide a minimum 32" clear opening. ICC / ANSI 404.2.2 <i>Currently provides 29" clear.</i>	1	\$1,500	\$1,500	4			
22-20B	16902	Re-hinge / relocate door to provide needed maneuvering clearance on the latch pull side of the door. ICC / ANSI 404.2.3, Table 404.2.3.1	1	\$750	\$750	4			
22E3	16904	Create a fully compliant 60" minimum wide toilet stall by combining two existing stalls and removing one toilet. Ensure that the new stall provides 48" minimum in front of the toilet, side and rear grab bars, toilet paper dispenser located below the horizontal grab bar, a low coat hook, easily operable stall locking hardware and staple style pulls on both sides of the stall door. MN 1341 604.3.1	1	\$1,350	\$1,350	4			
				<i>Location Subtotal:</i>		\$3,600			
Men's Toilet Room- 3rd Floor									
22E	16875	Enlarge to provide a fully compliant 60" minimum wide toilet stall. MN 1341 604.3.1	1	\$1,350	\$1,350	4			

Location JQP # / Item #	Solution / Comments	Qty	Unit Cost	Total Cost	Priority	Estimated Compl. Date	Person Responsible	Actual Compl. Date	Actual Cost
Men's Toilet Room- 4th Floor									
22E 16838	Enlarge to provide a fully compliant 60" minimum wide toilet stall. MN 1341 604.3.1	1	\$1,350	\$1,350	4				
Men's Toilet Room- Ground Level									
22.1 16956	Upgrade toilet room to be fully accessible. IBC 1109.2	1	\$10,000	\$10,000	4				
Mother's Room- 2nd Floor									
20A 16877	Widen door opening to provide a minimum 32" clear opening. ICC / ANSI 404.2.2 <i>Currently provides a 29" clear opening.</i>	1	\$1,500	\$1,500	4				
Parking Enforcement									
21A1 16960	Lower a minimum 36" wide section of counter to a maximum height of 36" above the floor. ICC ANSI 904.3 <i>Currently at 37". Lower to 34" maximum due to the 18 1/2" distance to reach back to the window opening. MN1341 308.3.2 (b)</i>	1	\$1,000	\$1,000	4				
Parking Office									
20B 16935	Re-hinge / relocate door to provide needed maneuvering clearance on the latch pull side of the door. ICC / ANSI 404.2.3, Table 404.2.3.1	1	\$400	\$400	4				

Location JQP # / Item #	Solution / Comments	Qty	Unit Cost	Total Cost	Priority	Estimated Compl. Date	Person Responsible	Actual Compl. Date	Actual Cost
Skyway									
15K 16929	Reconstruct ramp to provide a maximum slope of 1:12 (8.33%). ICC ANSI 405.2 <i>It is not technically feasible to modify the slope of the existing skyway ramp due to the elevation difference of the buildings.</i>	1	\$0	\$0	4				
US Mail Drop									
14F 16906	Lower object(s) so the highest operable part is no higher than 48". ICC / ANSI 308 <i>The mail slot is currently at 59".</i>	4	\$50	\$200	4				
Vending									
45C 16947	When renegotiating with product vendors, request vending machines with controls that do not require grasping, pinching or twisting to operate and are located 48" maximum AFF. ICC / ANSI 308, 309.4	1	\$0	\$0	4				
Women's Police Locker Room									
24 16951	Provide a fully compliant unisex toilet/shower room. IBC 1109.2 <i>The women's locker room does not appear to be used at this time.</i>	1	\$0	\$0	4				

Location JQP # / Item #	Solution / Comments	Qty	Unit Cost	Total Cost	Priority	Estimated Compl. Date	Person Responsible	Actual Compl. Date	Actual Cost
Women's Toilet Room- 1st Floor									
22-20A 16915	Widen door opening to provide a minimum 32" clear opening. ICC / ANSI 404.2.2 <i>Currently provides 29" clear openings.</i>	2	\$1,500	\$3,000	4				
22E3 16917	Create a fully compliant 60" minimum wide toilet stall by combining two existing stalls and removing one toilet. Ensure that the new stall provides 48" minimum in front of the toilet, side and rear grab bars, toilet paper dispenser located below the horizontal grab bar, a low coat hook, easily operable stall locking hardware and staple style pulls on both sides of the stall door. MN 1341 604.3.1	1	\$1,350	\$1,350	4				
				<i>Location Subtotal:</i>					\$4,350
Women's Toilet Room- 2nd Floor									
22-20B1 16884	Remove / relocate / replace moveable object to provide needed maneuvering clearance on the pull side of the door. ICC / ANSI 404.2.3, Table 404.2.3.1 <i>Currently provides 11 1/2" because of privacy screen.</i>	1	\$50	\$50	4				
22G (MN) 16880	Modify to provide a minimum clearance of 48" in front of the water closet. MN 1341 604.3.1 <i>Currently provides 28".</i>	1	\$1,000	\$1,000	4				
				<i>Location Subtotal:</i>					\$1,050
Women's Toilet Room- 3rd Floor									
22M 16844	Provide a water closet with a seat height 17"-19" above the floor. ANSI 604.4 <i>Currently at 15 1/2".</i>	1	\$750	\$750	4				
22N1 16842	Relocate the water closet flush valve so it is located on the open side of the water closet or provide an automatic flush system. MN1341 604.6	1	\$400	\$400	4				
				<i>Location Subtotal:</i>					\$1,150

Location JQP # / Item #	Solution / Comments	Qty	Unit Cost	Total Cost	Priority	Estimated Compl. Date	Person Responsible	Actual Compl. Date	Actual Cost
Women's Toilet Room- 4th Floor									
22E3 16813	Create a fully compliant 60" minimum wide toilet stall by combining two existing stalls and removing one toilet. Ensure that the new stall provides 48" minimum in front of the toilet, side and rear grab bars, toilet paper dispenser located below the horizontal grab bar, a low coat hook, easily operable stall locking hardware and staple style pulls on both sides of the stall door. MN 1341 604.3.1	1	\$1,350	\$1,350	4				
Women's Toilet Room- Ground Level									
22.1 16958	Upgrade toilet room to be fully accessible. IBC 1109.2	1	\$10,000	\$10,000	4				
				Priority # 4 Total	\$129,490				

Transition Plan - (location/priority)



Photo 1: View of skyway entry. There is not a level floor surface for the maneuvering clearance at the doors.



Photo 2: Add handrails along the ramp to the break room (15).

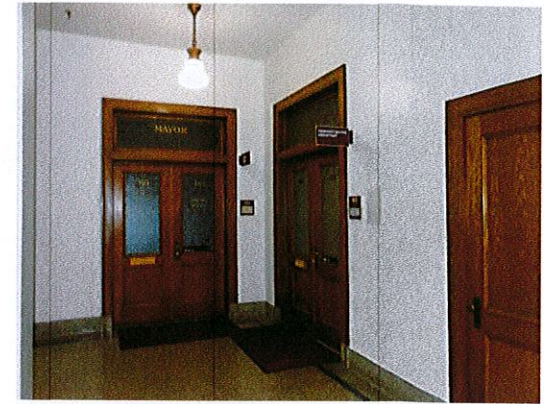


Photo 3: Typical corridor doors are narrow double doors (a single leaf provides a 27" clear opening vs. 32" min) with knob style hardware.

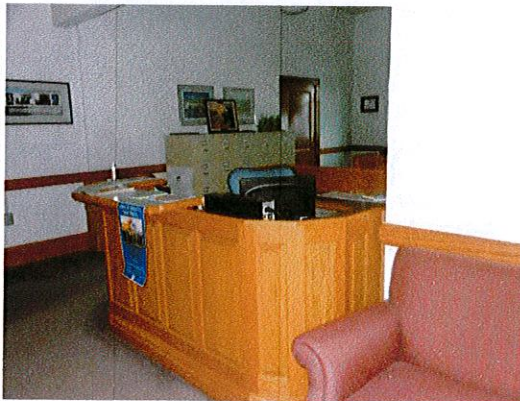


Photo 4: Typical reception counters are at 40" throughout the building (vs. 36" maximum).

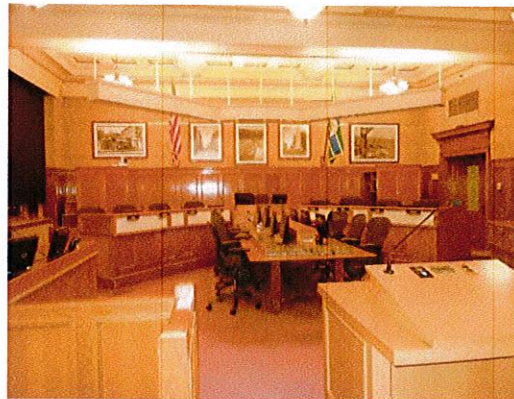


Photo 5: View of council chambers. The council member seating area is raised, a ramp is provided form the corridor doors.



Photo 6: View of council chambers seating area. There is currently 1 wheelchair position. Modify the bench seating to provide additional wheelchair positions (that do not obstruct egress routes).



Photo 7: Relocate and lower the pay box on ground floor. It is currently a protruding hazard and the pay slot is located above the reach range.

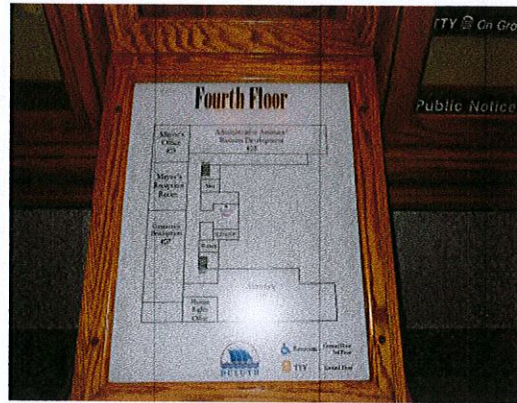


Photo 8: The map opposite the elevator indicates the location of accessibility features (toilet rooms, TTY). *This is a good example of accessibility.*



Photo 9: View of typical women's toilet room. Features of accessibility are not provided in the multi-fixture toilet rooms. Post signs directing to the unisex accessible toilet room.

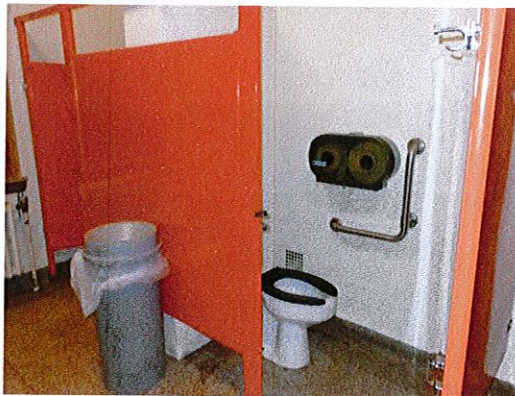


Photo 10: View of typical men's toilet room. Features of accessibility are not provided in the multi-fixture toilet rooms. Post signs directing to the unisex accessible toilet room.



Photo 11: Remodeling in the 1st and 2nd floor toilet rooms incorporated accessibility- such as providing sinks with knee and toe clearance and easily operable faucet hardware. *This is a good example of accessibility.*



Photo 12: An accessible single user toilet room has been created on 3rd floor. *This is a good example of accessibility.*