

## **Main Library**

The Main Library is located in downtown Duluth. The 3 story building was constructed to resemble a ship. There is an elevator serving all 3 levels, however staff assistance is required to take the elevator to the ground level (Michigan Street) due to security concerns. There are on-grade entries to ground level (Michigan Street) and 1st floor (Superior Street) plus a link to the tunnel. Currently accessible toilet rooms are not provided within the library. The staff toilet room on 2nd floor lends itself to being converted to a single-user accessible toilet room. The toilet rooms on 1st floor are currently reserved for children, however they are designed to adult standards. Low sections of the check-out desk and circulation desk are currently provided.

Location JQP # / Item #	Solution / Comments	Qty	Unit Cost	Total Cost	Priority	Estimated Compl. Date	Person Responsible	Actual Compl. Date	Actual Cost
<b>Elevator</b>									
18N 15699	Modify/replace elevator to allow unassisted entry, operation and exit. MN1341 407.1 <i>Currently staff assistance is required to take the elevator to ground level (Michigan Street) due to security concerns. (There are public spaces located on all levels.) Photo 2.</i>	1	\$100,000	\$100,000	1				
<b>Staff Toilet Room- 2nd Floor</b>									
22D 15720	Remove interior partitions to create a single use toilet room. It is recommended that a privacy lock be installed. ICC / ANSI 603.2 <i>JQP, Inc. recommends converting this location to a public single-user accessible toilet room. Currently no other toilet room in the building provides a toilet with 60" clearance. This location is recommended because: it is not within a secure staff area, it is not designated as 'children only' and there is only 1 fixture.</i>	1	\$1,500	\$1,500	1				
<b>Typewriter Rooms- 2nd Floor</b>									
14D2 15718	Relocate program as necessary to an accessible location to provide program access. MN 1341 1104.4 <i>The private typewrite rooms currently have a 30" clear door and the space is 54" wide overall. Relocate 1 of the typewriters to an accessible location as needed. Photo 4.</i>	1	\$0	\$0	1				
				<b>Priority # 1 Total</b>	<b>\$101,500</b>				

## Library- Main

## Accessibility Review

Location JQP # / Item #	Solution / Comments	Qty	Unit Cost	Total Cost	Priority	Estimated Compl. Date	Person Responsible	Actual Compl. Date	Actual Cost
<b>Building Wide</b>									
40B 15700	Provide compliant raised and Braille permanent room identification signage. MN 1341 1110.2	50	\$40	\$2,000	2				
<b>Green Meeting Room- Ground Level</b>									
26B 15807	Provide a portable assistive listening system with signage. IBC 1108.2.6	1	\$1,200	\$1,200	2				
<b>Ground Level (Michigan Street)- Skyway Entry</b>									
15808	<i>The control button for the power door opener is currently located on an incline. Relocate to a location with 1:48 max slope. Photo 1.</i>	1	\$1,000	\$1,000	2				
<b>Ground Level- Adjacent to Stairs</b>									
22A3 15796	Remove the sign displaying the International Symbol of Accessibility as this toilet room is NOT accessible, or is not fully accessible. Install directional signage identifying the location of the nearest accessible toilet room. MN 1341 1110.2 <i>There is currently a directional sign at the stairwell indicating the men's and women's toilet rooms on the ground level are accessible. Remove this sign, these toilet rooms are not currently accessible.</i>	1	\$50	\$50	2				

Location JQP # / Item #	Solution / Comments	Qty	Unit Cost	Total Cost	Priority	Estimated Compl. Date	Person Responsible	Actual Compl. Date	Actual Cost
<b>Pay Phone</b>									
42B	15729 Relocate the existing telephone to a location where clear floor space is available or remove obstruction that obstructs the clear floor space at the telephone. ICC / ANSI 604.2.1 <i>Relocate the bench that is currently positioned below the telephone. Photo 5.</i>	1	\$100	\$100	2				
42E	15728 Lower the telephone so the highest operable part is no higher 48" above the floor. ICC / ANSI 704.2.2 <i>Currently at 60". (Or remove the phone.) Photo 5.</i>	1	\$100	\$100	2				
				<i>Location Subtotal:</i>					\$200
				<b>Priority # 2 Total</b>					<b>\$4,450</b>

## Library- Main

## Accessibility Review

Location JQP # / Item #	Solution / Comments	Qty	Unit Cost	Total Cost	Priority	Estimated Compl. Date	Person Responsible	Actual Compl. Date	Actual Cost
<b>Boy's Toilet Room- 1st Floor</b>									
22-20C1 15740	Relocate object to achieve needed maneuvering clearance on the push side of the door. ICC / ANSI 404.2.3, Table 404.2.3.1 <i>The bookcase currently obstructs the approach on the push side of the door. Photo 7.</i>	1	\$50	\$50	3				
22B 15732	Install signage with appropriate raised and Braille lettering. MN 1341 1110.2 <i>The sign is currently mounted on the door.</i>	1	\$40	\$40	3				
22E1 15733	Enlarge to provide a fully compliant 60" minimum wide toilet stall. (Currently an alternate stall is provided). MN 1341 604.3.1 <i>Consider modifying this location to meet children's standards (signs indicate this location is for children's use only).</i>	1	\$1,350	\$1,350	3				
22H1 15736	Provide staple style pulls on both sides of the accessible stall door near the latch. ANSI 604.8.3	1	\$50	\$50	3				
22J 15735	Provide stall door hardware that does not require grasping, pinching or twisting to operate. ICC ANSI 309.4	1	\$50	\$50	3				
22K6 (MN) 15734	Remove the existing grab bar configuration and replace with a compliant grab bar configuration. MN 1341 604.5.1 ANSI 604.5.2	1	\$400	\$400	3				
22V 15739	Install a full-height mirror or provide a mirror where the bottom of the reflective surface is no higher than 40" above the floor. MN 1341 603.3 <i>Currently at 49".</i>	1	\$300	\$300	3				
22Z 15737	Provide a coat hook positioned so the highest operable part is no higher than 48". ICC / ANSI 604.11	1	\$50	\$50	3				
				<i>Location Subtotal:</i>					\$2,290
<b>Exterior Stage</b>									
15810	<i>Create an accessible route to the stage (15" rise). MN1341 1108.2.7</i>	1	\$750	\$750	3				

## Library- Main

## Accessibility Review

Location JQP # / Item #	Solution / Comments	Qty	Unit Cost	Total Cost	Priority	Estimated Compl. Date	Person Responsible	Actual Compl. Date	Actual Cost
<b>Girl's Toilet Room- 1st Floor</b>									
22-20C1 15749	Relocate object to achieve needed maneuvering clearance on the push side of the door. ICC / ANSI 404.2.3, Table 404.2.3.1 <i>The bookcase currently obstructs the approach on the push side of the door. Photo 7.</i>	1	\$50	\$50	3				
22B 15741	Install signage with appropriate raised and Braille lettering. MN 1341 1110.2 <i>The sign is currently mounted on the door.</i>	1	\$40	\$40	3				
22E1 15742	Enlarge to provide a fully compliant 60" minimum wide toilet stall. (Currently an alternate stall is provided). MN 1341 604.3.1 <i>Consider modifying this location to meet children's standards (signs indicate this location is for children's use only).</i>	1	\$1,350	\$1,350	3				
22H1 15745	Provide staple style pulls on both sides of the accessible stall door near the latch. ANSI 604.8.3	1	\$50	\$50	3				
22J 15744	Provide stall door hardware that does not require grasping, pinching or twisting to operate. ICC ANSI 309.4	1	\$50	\$50	3				
22K6 (MN) 15743	Remove the existing grab bar configuration and replace with a compliant grab bar configuration. MN 1341 604.5.1 ANSI 604.5.2	1	\$400	\$400	3				
22V 15748	Install a full-height mirror or provide a mirror where the bottom of the reflective surface is no higher than 40" above the floor. MN 1341 603.3 <i>Currently at 49".</i>	1	\$300	\$300	3				
22Z 15746	Provide a coat hook positioned so the highest operable part is no higher than 48". ICC / ANSI 604.11	1	\$50	\$50	3				
				<i>Location Subtotal:</i>					\$2,290

Location JQP # / Item #	Solution / Comments	Qty	Unit Cost	Total Cost	Priority	Estimated Compl. Date	Person Responsible	Actual Compl. Date	Actual Cost
<b>Men's Toilet Room- 2nd Floor</b>									
22B	15709	1	\$40	\$40	3				
	Install signage with appropriate raised and Braille lettering. MN 1341 1110.2 <i>The sign is currently mounted on the door.</i>								
22E1	15710	1	\$1,350	\$1,350	3				
	Enlarge to provide a fully compliant 60" minimum wide toilet stall. (Currently an alternate stall is provided). MN 1341 604.3.1								
22H1	15713	1	\$50	\$50	3				
	Provide staple style pulls on both sides of the accessible stall door near the latch. ANSI 604.8.3								
22J	15712	1	\$50	\$50	3				
	Provide stall door hardware that does not require grasping, pinching or twisting to operate. ICC ANSI 309.4								
22K6 (MN)	15711	1	\$400	\$400	3				
	Remove the existing grab bar configuration and replace with a compliant grab bar configuration. MN 1341 604.5.1 ANSI 604.5.2								
22V	15716	1	\$300	\$300	3				
	Install a full-height mirror or provide a mirror where the bottom of the reflective surface is no higher than 40" above the floor. MN 1341 603.3 <i>Currently at 49".</i>								
22Z	15714	1	\$50	\$50	3				
	Provide a coat hook positioned so the highest operable part is no higher than 48". ICC / ANSI 604.11								
				<i>Location Subtotal:</i>	<b>\$2,240</b>				

## Library- Main

## Accessibility Review

Location JQP # / Item #	Solution / Comments	Qty	Unit Cost	Total Cost	Priority	Estimated Compl. Date	Person Responsible	Actual Compl. Date	Actual Cost
<b>Men's Toilet Room- Ground Level</b>									
22B	15786	Install signage with appropriate raised and Braille lettering. MN 1341 1110.2 <i>The sign is currently mounted on the door.</i>		1	\$40	\$40	3		
22E1	15787	Enlarge to provide a fully compliant 60" minimum wide toilet stall. (Currently an alternate stall is provided). MN 1341 604.3.1		1	\$1,350	\$1,350	3		
22H1	15790	Provide staple style pulls on both sides of the accessible stall door near the latch. ANSI 604.8.3		1	\$50	\$50	3		
22J	15789	Provide stall door hardware that does not require grasping, pinching or twisting to operate. ICC ANSI 309.4		1	\$50	\$50	3		
22K6 (MN)	15788	Remove the existing grab bar configuration and replace with a compliant grab bar configuration. MN 1341 604.5.1 ANSI 604.5.2		1	\$400	\$400	3		
22V	15793	Install a full-height mirror or provide a mirror where the bottom of the reflective surface is no higher than 40" above the floor. MN 1341 603.3 <i>Currently at 49".</i>		1	\$300	\$300	3		
22Z	15791	Provide a coat hook positioned so the highest operable part is no higher than 48". ICC / ANSI 604.11		1	\$50	\$50	3		
				<i>Location Subtotal:</i>		\$2,240			
<b>Staff Lounge- Ground Level</b>									
25J9	15760	Create an accessible kitchen, including: roll under work surface, roll under sink, range with front or side controls, and compliant clearances. ANSI 804		1	\$7,000	\$7,000	3		



## Library- Main

## Accessibility Review

Location JQP # / Item #	Solution / Comments	Qty	Unit Cost	Total Cost	Priority	Estimated Compl. Date	Person Responsible	Actual Compl. Date	Actual Cost
<b>Women's Toilet Room- 2nd Floor</b>									
22B	15701 Install signage with appropriate raised and Braille lettering. MN 1341 1110.2 <i>The sign is currently mounted on the door.</i>	1	\$40	\$40	3				
22E1	15702 Enlarge to provide a fully compliant 60" minimum wide toilet stall. (Currently an alternate stall is provided). MN 1341 604.3.1 <i>Photo 8.</i>	1	\$1,350	\$1,350	3				
22H1	15705 Provide staple style pulls on both sides of the accessible stall door near the latch. ANSI 604.8.3	1	\$50	\$50	3				
22J	15704 Provide stall door hardware that does not require grasping, pinching or twisting to operate. ICC ANSI 309.4	1	\$50	\$50	3				
22K6 (MN)	15703 Remove the existing grab bar configuration and replace with a compliant grab bar configuration. MN 1341 604.5.1 ANSI 604.5.2	1	\$400	\$400	3				
22V	15708 Install a full-height mirror or provide a mirror where the bottom of the reflective surface is no higher than 40" above the floor. MN 1341 603.3 <i>Currently at 49". Photo 9.</i>	1	\$300	\$300	3				
22Z	15706 Provide a coat hook positioned so the highest operable part is no higher than 48". ICC / ANSI 604.11	1	\$50	\$50	3				
				<i>Location Subtotal:</i>					\$2,240

Library- Main

Accessibility Review

Location JQP # / Item #	Solution / Comments	Qty	Unit Cost	Total Cost	Priority	Estimated Compl. Date	Person Responsible	Actual Compl. Date	Actual Cost
<b>Women's Toilet Room- Ground Level</b>									
22B 15798	Install signage with appropriate raised and Braille lettering. MN 1341 1110.2 <i>The sign is currently mounted on the door.</i>	1	\$40	\$40	3				
22E1 15799	Enlarge to provide a fully compliant 60" minimum wide toilet stall. (Currently an alternate stall is provided). MN 1341 604.3.1	1	\$1,350	\$1,350	3				
22H1 15802	Provide staple style pulls on both sides of the accessible stall door near the latch. ANSI 604.8.3	1	\$50	\$50	3				
22J 15801	Provide stall door hardware that does not require grasping, pinching or twisting to operate. ICC ANSI 309.4	1	\$50	\$50	3				
22K6 (MN) 15800	Remove the existing grab bar configuration and replace with a compliant grab bar configuration. MN 1341 604.5.1 ANSI 604.5.2	1	\$400	\$400	3				
22V 15805	Install a full-height mirror or provide a mirror where the bottom of the reflective surface is no higher than 40" above the floor. MN 1341 603.3 <i>Currently at 49".</i>	1	\$300	\$300	3				
22Z 15803	Provide a coat hook positioned so the highest operable part is no higher than 48". ICC / ANSI 604.11	1	\$50	\$50	3				
				<i>Location Subtotal:</i>					\$2,240
				<b>Priority # 3 Total</b>					<b>\$21,290</b>

Location	Solution / Comments	Qty	Unit Cost	Total Cost	Priority	Estimated Compl. Date	Person Responsible	Actual Compl. Date	Actual Cost
JQP # / Item #									
<b>Boy's Toilet Room- 1st Floor</b>									
22P5	15738	Lower lavatory so top edge is no higher than 34" AFF. ICC / ANSI 606.3 <i>Currently at 35".</i>	1	\$500	\$500	4			
<b>Building Wide</b>									
41A1	15809	Provide a minimum of one drinking fountain that has a 36" spout height accessible for persons using wheelchairs (low) and one standard height (high) drinking fountain with a spout height 38" minimum and 43" maximum for persons who have difficulty bending or stooping. ANSI 602.4 <i>Currently each level has 1 drinking fountain with a 36" spout height.</i>	3	\$1,500	\$4,500	4			
<b>Corridor (Business Services)- Ground Level.</b>									
20B	15757	Re-hinge / relocate door to provide needed maneuvering clearance on the latch pull side of the door. ICC / ANSI 404.2.3, Table 404.2.3.1	1	\$400	\$400	4			
20P	15758	Lower the window in the door (or the sidelite) so the bottom is at 43" maximum. ICC / ANSI 404.2.10	1	\$250	\$250	4			
				<i>Location Subtotal:</i>					\$650
<b>Corridor- Ground Level</b>									
20P	15753	Lower the window in the door (or the sidelite) so the bottom is at 43" maximum. ICC / ANSI 404.2.10 <i>Currently at 53".</i>	1	\$250	\$250	4			

Location	Solution / Comments	Qty	Unit Cost	Total Cost	Priority	Estimated Compl. Date	Person Responsible	Actual Compl. Date	Actual Cost
JQP # / Item #									
<b>Girl's Toilet Room- 1st Floor</b>									
22P5 15747	Lower lavatory so top edge is no higher than 34" AFF. ICC / ANSI 606.3 <i>Currently at 35".</i>	1	\$500	\$500	4				
<b>Gold Meeting Room- Ground Level</b>									
20P 15784	Lower the window in the door (or the sidelite) so the bottom is at 43" maximum. ICC / ANSI 404.2.10	1	\$250	\$250	4				
<b>Green Meeting Room- Ground Level</b>									
20P 15806	Lower the window in the door (or the sidelite) so the bottom is at 43" maximum. ICC / ANSI 404.2.10	1	\$250	\$250	4				
<b>Men's Toilet Room- 2nd Floor</b>									
22P5 15715	Lower lavatory so top edge is no higher than 34" AFF. ICC / ANSI 606.3 <i>Currently at 35".</i>	1	\$500	\$500	4				
<b>Men's Toilet Room- Ground Level</b>									
22-20B0 15785	Install an automatic door opener to address non-compliant maneuvering clearance at the door. (Note: Automatic door opener is not required) ICC / ANSI 404.2.3, Table 404.2.3.1 <i>Currently provides 0". Photo 10.</i>	1	\$1,500	\$1,500	4				
22P5 15792	Lower lavatory so top edge is no higher than 34" AFF. ICC / ANSI 606.3 <i>Currently at 35".</i>	1	\$500	\$500	4				
				<i>Location Subtotal:</i>	\$2,000				

Location	Solution / Comments	Qty	Unit Cost	Total Cost	Priority	Estimated Compl. Date	Person Responsible	Actual Compl. Date	Actual Cost
JQP # / Item #									
<b>North Shore Room- 2nd Floor</b>									
20A1 15717	Modify widths of double doors (1 large/1small) to provide a single leaf with a minimum 32" clear opening. ICC / ANSI 404.2.2 <i>A single leaf currently provides a 27" clear opening.</i>	1	\$1,500	\$1,500	4				
<b>Round Conference Room- Ground Level</b>									
25J9 15756	Create an accessible kitchen, including: roll under work surface, roll under sink, range with front or side controls, and compliant clearances. ANSI 804 <i>There is currently a full kitchen in the closet. Photo 6.</i>	1	\$7,000	\$7,000	4				
<b>Self Check-Out</b>									
29A 15730	Provide a minimum of one computer lab on an accessible permanent or movable table / counter. The top height of the surface is to be 28"-34" above the floor, with knee clearance a minimum 27" high by 30" wide x 19" deep. ICC / ANSI 902.2 <i>Currently the self check-out computers are located on a 36" high counter. Consider relocating a minimum of 1 self check-out computer to an accessible location (36" height is compliant for a sales/service counter, but because the user handles their own transaction this is more of a work surface).</i>	1	\$200	\$200	4				
<b>Shop</b>									
20A1 15761	Modify widths of double doors (1 large/1small) to provide a single leaf with a minimum 32" clear opening. ICC / ANSI 404.2.2 <i>A single leaf currently provides a 29" clear opening.</i>	1	\$1,500	\$1,500	4				

Location	Solution / Comments	Qty	Unit Cost	Total Cost	Priority	Estimated Compl. Date	Person Responsible	Actual Compl. Date	Actual Cost
JQP # / Item #									
<b>Staff Locker Room- Ground Level</b>									
20B	15767	Re-hinge / relocate door to provide needed maneuvering clearance on the latch pull side of the door. ICC / ANSI 404.2.3, Table 404.2.3.1	1	\$400	\$400	4			
24S	15769	Provide accessible locking mechanisms. MN1341 905.4, 309 <i>Currently all of the lockers have built-in twist combination locks.</i>	1	\$200	\$200	4			
24V	15768	In the changing/locker room, provide a bench, 20"-24" deep x 48" long, fixed to the wall or with a back along the longer dimension. The bench is to be mounted 17"-19" above the floor at the accessible dressing room and provide clear floor space at the end of the bench. MN1341 903	1	\$200	\$200	4			
				<i>Location Subtotal:</i>					\$800
<b>Staff Lounge- Ground Level</b>									
20B	15759	Re-hinge / relocate door to provide needed maneuvering clearance on the latch pull side of the door. ICC / ANSI 404.2.3, Table 404.2.3.1	1	\$400	\$400	4			

Location JQP # / Item #	Solution / Comments	Qty	Unit Cost	Total Cost	Priority	Estimated Compl. Date	Person Responsible	Actual Compl. Date	Actual Cost
<b>Staff Men's Toilet Room- Ground Level</b>									
22-20B 15778	Re-hinge / relocate door to provide needed maneuvering clearance on the latch pull side of the door. ICC / ANSI 404.2.3, Table 404.2.3.1 <i>Currently provides 2".</i>	1	\$750	\$750	4				
22B 15777	Install signage with appropriate raised and Braille lettering. MN 1341 1110.2	1	\$40	\$40	4				
22E1 15779	Enlarge to provide a fully compliant 60" minimum wide toilet stall. (Currently an alternate stall is provided). MN 1341 604.3.1	1	\$1,350	\$1,350	4				
22K6 (MN) 15780	Remove the existing grab bar configuration and replace with a compliant grab bar configuration. MN 1341 604.5.1 ANSI 604.5.2	1	\$400	\$400	4				
22P5 15782	Lower lavatory so top edge is no higher than 34" AFF. ICC / ANSI 606.3 <i>Currently at 35".</i>	1	\$500	\$500	4				
22V 15783	Install a full-height mirror or provide a mirror where the bottom of the reflective surface is no higher than 40" above the floor. MN 1341 603.3	1	\$300	\$300	4				
24B1 15781	Modify the size of the shower to be either a compliant roll-in shower (minimum 30" x 60") or a compliant transfer shower (36" x 36" exact). MN1341 608.2 <i>The shower is currently 44"x43" with a 5" threshold.</i>	1	\$1,000	\$1,000	4				
				<i>Location Subtotal:</i>					\$4,340
<b>Staff Office- 1st Floor (Adjacent to Elevator)</b>									
20B 15750	Re-hinge / relocate door to provide needed maneuvering clearance on the latch pull side of the door. ICC / ANSI 404.2.3, Table 404.2.3.1	1	\$400	\$400	4				
27B 15751	Modify / replace sink and / or counter so rim is no higher than 34". ICC / ANSI 606.3 <i>Currently at 36".</i>	1	\$1,000	\$1,000	4				
27D 15752	Replace faucet hardware. ICC / ANSI 309.4, 606.4	1	\$450	\$450	4				
				<i>Location Subtotal:</i>					\$1,850

Library- Main

Location JQP # / Item #	Solution / Comments	Qty	Unit Cost	Total Cost	Priority	Estimated Compl. Date	Person Responsible	Actual Compl. Date	Actual Cost
<b>Staff Office- Kids</b>									
20B 15731	Re-hinge / relocate door to provide needed maneuvering clearance on the latch pull side of the door. ICC / ANSI 404.2.3, Table 404.2.3.1	2	\$400	\$800	4				
<b>Staff Offices- 2nd Floor (Collectibles)</b>									
20B 15719	Re-hinge / relocate door to provide needed maneuvering clearance on the latch pull side of the door. ICC / ANSI 404.2.3, Table 404.2.3.1 <i>Currently provides 0".</i>	1	\$400	\$400	4				
<b>Staff Rest Room- Ground Level</b>									
22C2 (MN) 15762	Relocate the lavatory or enlarge the room to provide a minimum 42" between the lavatory and the center of the water closet. ANSI 604.3.2 <i>The sink is currently within the clearance for the toilet. No action recommended, okay at time of construction.</i>	1	\$0	\$0	4				
22K6 (MN) 15763	Remove the existing grab bar configuration and replace with a compliant grab bar configuration. MN 1341 604.5.1 ANSI 604.5.2	1	\$400	\$400	4				
22N1 15764	Relocate the water closet flush valve so it is located on the open side of the water closet or provide an automatic flush system. MN1341 604.6	1	\$400	\$400	4				
22Q 15765	Insulate or otherwise protect exposed pipes at lavatory. ICC / ANSI 606.6	1	\$50	\$50	4				
22V 15766	Install a full-height mirror or provide a mirror where the bottom of the reflective surface is no higher than 40" above the floor. MN 1341 603.3	1	\$300	\$300	4				
				<i>Location Subtotal:</i>	\$1,150				

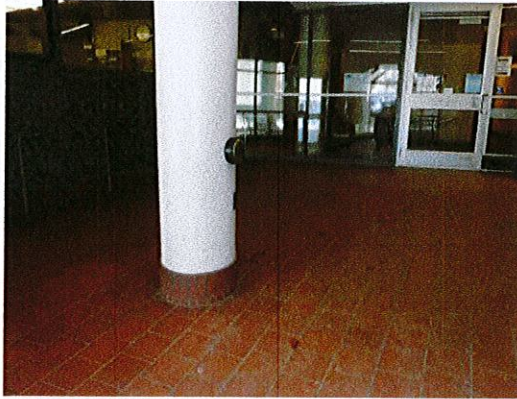


Location JQP # / Item #	Solution / Comments	Qty	Unit Cost	Total Cost	Priority	Estimated Compl. Date	Person Responsible	Actual Compl. Date	Actual Cost
<b>Staff Toilet Room- Ground Level</b>									
22	15755 Enlarge and upgrade the toilet room to be fully accessible. IBC 1109.2	1	\$10,000	\$10,000	4				
<b>Staff Women's Toilet Room- Ground Level</b>									
22-20B	15771 Re-hinge / relocate door to provide needed maneuvering clearance on the latch pull side of the door. ICC / ANSI 404.2.3, Table 404.2.3.1 <i>Currently provides 2".</i>	1	\$750	\$750	4				
22B	15770 Install signage with appropriate raised and Braille lettering. MN 1341 1110.2	1	\$40	\$40	4				
22E1	15772 Enlarge to provide a fully compliant 60" minimum wide toilet stall. (Currently an alternate stall is provided). MN 1341 604.3.1	1	\$1,350	\$1,350	4				
22K6 (MN)	15773 Remove the existing grab bar configuration and replace with a compliant grab bar configuration. MN 1341 604.5.1 ANSI 604.5.2	1	\$400	\$400	4				
22P5	15775 Lower lavatory so top edge is no higher than 34" AFF. ICC / ANSI 606.3 <i>Currently at 35".</i>	1	\$500	\$500	4				
22V	15776 Install a full-height mirror or provide a mirror where the bottom of the reflective surface is no higher than 40" above the floor. MN 1341 603.3	1	\$300	\$300	4				
24B1	15774 Modify the size of the shower to be either a compliant roll-in shower (minimum 30" x 60") or a compliant transfer shower (36" x 36" exact). MN1341 608.2 <i>The shower is currently 44"x43" with a 5" threshold.</i>	1	\$1,000	\$1,000	4				
				<i>Location Subtotal:</i>					\$4,340
<b>Tech Services- Ground Level</b>									
20P	15754 Lower the window in the door (or the sidelite) so the bottom is at 43" maximum. ICC / ANSI 404.2.10	1	\$250	\$250	4				

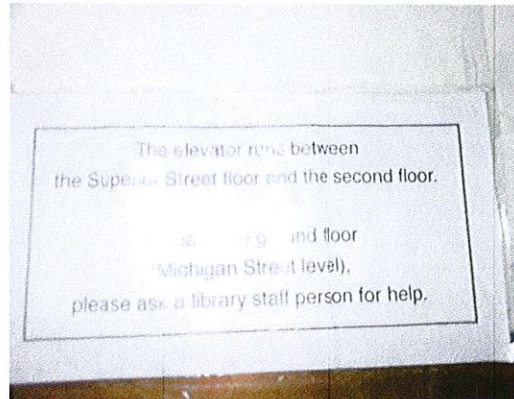
Library- Main

Location JQP # / Item #	Solution / Comments	Qty	Unit Cost	Total Cost	Priority	Estimated Compl. Date	Person Responsible	Actual Compl. Date	Actual Cost
<b>Women's Toilet Room- 2nd Floor</b>									
22P5 15707	Lower lavatory so top edge is no higher than 34" AFF. ICC / ANSI 606.3 <i>Currently at 35".</i>	1	\$500	\$500	4				
<b>Women's Toilet Room- Ground Level</b>									
22-20B0 15797	Install an automatic door opener to address non-compliant maneuvering clearance at the door. (Note: Automatic door opener is not required) ICC / ANSI 404.2.3, Table 404.2.3.1 <i>Currently provides 0". Photo 10.</i>	1	\$1,500	\$1,500	4				
22P5 15804	Lower lavatory so top edge is no higher than 34" AFF. ICC / ANSI 606.3 <i>Currently at 35".</i>	1	\$500	\$500	4				
				<i>Location Subtotal:</i>					\$2,000
				<b>Priority # 4 Total</b>					<b>\$46,430</b>

Transition Plan - (location/priority)



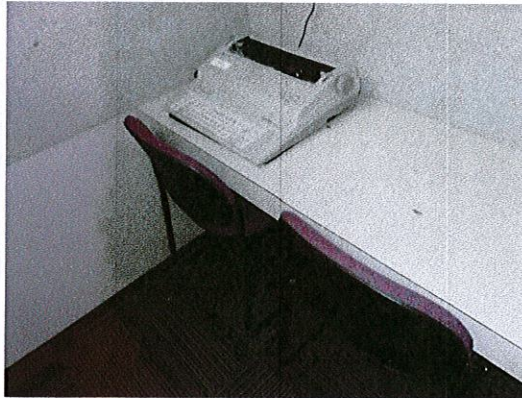
**Photo 1:** Relocate the control button for the power door opener to a location with 1:48 max slope.



**Photo 2:** Modify policy to allow independent use of the elevator. Currently staff assistance is necessary to reach ground floor (Michigan St).



**Photo 3:** Catalogs are provided at standing height desks and a desk with knee and toe clearance. *This is a good example of accessibility.*



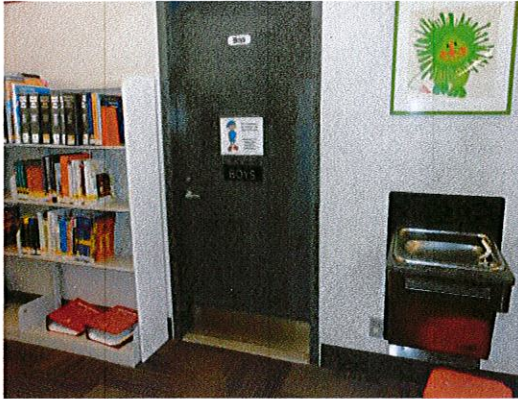
**Photo 4:** Relocate a typewriter to an accessible location if requested. (The current private cubicles are too small.)



**Photo 5:** Relocate the bench so it does not obstruct the approach to the pay phone. Lower the phone so the coin slot is 48" max AFF (currently 60").



**Photo 6:** View of small kitchen in the closet of the Round Conference Room.



**Photo 7:** The book case currently obstructs the clearance on the push side of the boy's and girl's toilet rooms.



**Photo 8:** View of typical toilet room. Ambulatory accessible stalls are provided, but there is not a 60" wide accessible stall in the building.



**Photo 9:** Lower the mirror to 40" maximum (or add an additional mirror).



**Photo 10:** Maneuvering clearance is not currently provided on the pull (interior) side of the toilet rooms in the lower level.