

## **Fleet Services**

The Fleet Services building is primarily single level, with the parts department located on a mezzanine. Recent remodeling provided some features of accessibility in the toilet/shower rooms, although they do not fully comply. Features of accessibility were incorporated in to the kitchen remodel.

Fleet Services

Accessibility Review

Location JQP # / Item #	Solution / Comments	Qty	Unit Cost	Total Cost	Priority	Estimated Compl. Date	Person Responsible	Actual Compl. Date	Actual Cost
<b>Parts Office</b>									
14D2 15917	Relocate program as necessary to an accessible location to provide program access. MN 1341 1104.4 <i>There is not currently an accessible route to the parts office on the upper level.</i>	1	\$0	\$0	1				
				<b>Priority # 1 Total</b>	<b>\$0</b>				

Fleet Services

Accessibility Review

Location JQP # / Item #	Solution / Comments	Qty	Unit Cost	Total Cost	Priority	Estimated Compl. Date	Person Responsible	Actual Compl. Date	Actual Cost
<b>Building Wide</b>									
20D 15892	Provide door hardware that does not require grasping, pinching or twisting to operate, such as lever. ICC / ANSI 404.2.6	5	\$250	\$1,250	3				
<b>Conference Room</b>									
25J1 15894	Provide accessible faucet hardware. ANSI 804.4, 606.4 <i>Photo 2.</i>	1	\$450	\$450	3				
<b>Employee Entry- West</b>									
08D 15918	Bevel abrupt rises in the sidewalk. ANSI 303.3 <i>Currently a 3" rise.</i>	1	\$200	\$200	3				
<b>Main Entry</b>									
08D 15889	Bevel abrupt rises in the sidewalk. ANSI 303.3 <i>Photo 1.</i>	1	\$500	\$500	3				
12B1 15890	Extend sidewalk to provide appropriate maneuvering clearance on the latch side of the door. ICC / ANSI 404.2.3.1 <i>Photo 1.</i>	1	\$500	\$500	3				
				<i>Location Subtotal:</i>					\$1,000
<b>Men's Locker Room</b>									
22K6 (MN) 15912	Remove the existing grab bar configuration and replace with a compliant grab bar configuration. MN 1341 604.5.1 ANSI 604.5.2	1	\$400	\$400	3				

Fleet Services

Accessibility Review

Location JQP # / Item #	Solution / Comments	Qty	Unit Cost	Total Cost	Priority	Estimated Compl. Date	Person Responsible	Actual Compl. Date	Actual Cost
<b>Men's Toilet Room</b>									
22-20D 15897	Provide door hardware that does not require grasping, pinching or twisting to operate, such as lever, push pull, etc. ICC / ANSI 404.2.6	1	\$250	\$250	3				
22B 15896	Install signage with appropriate raised and Braille lettering. MN 1341 1110.2	1	\$40	\$40	3				
				<i>Location Subtotal:</i>					\$290
<b>Parking- Front</b>									
05A 15897	Stripe an appropriate number of accessible parking stalls and provide appropriate permanent signage. IBC 1106.1 <i>There are 8 parking spaces, currently none have been designated as accessible.</i>	1	\$400	\$400	3				
<b>Women's Locker Room</b>									
22K6 (MN) 15905	Remove the existing grab bar configuration and replace with a compliant grab bar configuration. MN 1341 604.5.1 ANSI 604.5.2	1	\$400	\$400	3				
				<b>Priority # 3 Total</b>					<b>\$4,390</b>

Fleet Services

Accessibility Review

Location JQP # / Item #	Solution / Comments	Qty	Unit Cost	Total Cost	Priority	Estimated Compl. Date	Person Responsible	Actual Compl. Date	Actual Cost
<b>Conference Room</b>									
27B 15895	Modify / replace sink and / or counter so rim is no higher than 34". ICC / ANSI 606.3	1	\$1,000	\$1,000	4				
<b>Corridor- to garage</b>									
20P 15916	Lower the window in the door (or the sidelite) so the bottom is at 43" maximum. ICC / ANSI 404.2.10 <i>Currently at 51".</i>	1	\$250	\$250	4				
<b>Drinking Fountain</b>									
41A1 15893	Provide a minimum of one drinking fountain that has a 36" spout height accessible for persons using wheelchairs (low) and one standard height (high) drinking fountain with a spout height 38" minimum and 43" maximum for persons who have difficulty bending or stooping. ANSI 602.4 <i>There is currently 1 drinking fountain at 36".</i>	1	\$1,500	\$1,500	4				
<b>Employee Entry- East</b>									
08D 15919	Bevel abrupt rises in the sidewalk. ANSI 303.3 <i>Currently a 7" rise.</i>	1	\$500	\$500	4				
<b>Main Entry</b>									
20M 15891	Provide a smooth surface at the bottom (within 10" of the floor) of the door, that extends the full width of the door. ICC / ANSI 404.2.9	1	\$50	\$50	4				

Fleet Services

Accessibility Review

Location JQP # / Item #	Solution / Comments	Qty	Unit Cost	Total Cost	Priority	Estimated Compl. Date	Person Responsible	Actual Compl. Date	Actual Cost
<b>Men's Locker Room</b>									
22-20B 15909	Re-hinge / relocate door to provide needed maneuvering clearance on the latch pull side of the door. ICC / ANSI 404.2.3, Table 404.2.3.1 <i>Currently provides 5 3/4".</i>	1	\$750	\$750	4				
22E1 15911	Enlarge to provide a fully compliant 60" minimum wide toilet stall. (Currently an alternate stall is provided). MN 1341 604.3.1	1	\$1,350	\$1,350	4				
22Q 15910	Insulate or otherwise protect exposed pipes at lavatory. ICC / ANSI 606.6	1	\$50	\$50	4				
24D 15913	Provide a compliant shower seat. ICC / ANSI 608.4, 610	1	\$750	\$750	4				
24E 15914	Provide a compliant hand-held shower unit. ICC / ANSI 608.5, 608.6	1	\$475	\$475	4				
24I 15915	Install compliant shower grab bars. ICC / ANSI 608.3.1	1	\$400	\$400	4				
				<i>Location Subtotal:</i>					\$3,775

Men's Toilet Room

22-20A 15899	Widen door opening to provide a minimum 32" clear opening. ICC / ANSI 404.2.2 <i>Currently provides a 29" clear opening.</i>	1	\$1,500	\$1,500	4				
22E1 15900	Enlarge to provide a fully compliant 60" minimum wide toilet stall. (Currently an alternate stall is provided). MN 1341 604.3.1	1	\$1,350	\$1,350	4				
22K6 (MN) 15901	Remove the existing grab bar configuration and replace with a compliant grab bar configuration. MN 1341 604.5.1 ANSI 604.5.2	1	\$400	\$400	4				
22Q 15898	Insulate or otherwise protect exposed pipes at lavatory. ICC / ANSI 606.6	1	\$50	\$50	4				
				<i>Location Subtotal:</i>					\$3,300

Fleet Services

Accessibility Review

Location JQP # / Item #	Solution / Comments	Qty	Unit Cost	Total Cost	Priority	Estimated Compl. Date	Person Responsible	Actual Compl. Date	Actual Cost
<b>Parking- Back</b>									
05A 15888	Stripe an appropriate number of accessible parking stalls and provide appropriate permanent signage. IBC 1106.1 <i>There are 13 parking spaces, currently none have been designated as accessible.</i>	1	\$400	\$400	4				
<b>Parts Office</b>									
20A1 15921	Modify widths of double doors (1 large/1small) to provide a single leaf with a minimum 32" clear opening. ICC / ANSI 404.2.2 <i>The counter/window is currently at 42 1/2". (Note: there is not currently an accessible route to the parts office.)</i>	1	\$1,500	\$1,500	4				
<b>Shop</b>									
27E 15920	Modify the foot activated wash basin to provide hand operated controls, automatic sensor, or replace with or add a wall hung fully compliant sink. ICC / ANSI 309.4, 606.4	1	\$450	\$450	4				

Fleet Services

Accessibility Review

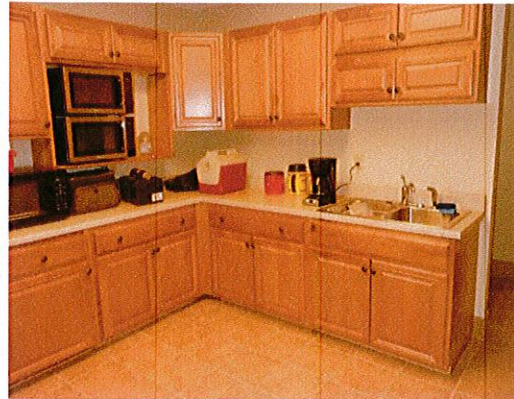
Location JQP # / Item #	Solution / Comments	Qty	Unit Cost	Total Cost	Priority	Estimated Compl. Date	Person Responsible	Actual Compl. Date	Actual Cost
<b>Women's Locker Room</b>									
22-20B 15902	Re-hinge / relocate door to provide needed maneuvering clearance on the latch pull side of the door. ICC / ANSI 404.2.3, Table 404.2.3.1 <i>Currently provides 5 3/4".</i>	1	\$750	\$750	4				
22E1 15904	Enlarge to provide a fully compliant 60" minimum wide toilet stall. (Currently an alternate stall is provided). MN 1341 604.3.1 <i>Photo 3.</i>	1	\$1,350	\$1,350	4				
22Q 15903	Insulate or otherwise protect exposed pipes at lavatory. ICC / ANSI 606.6	1	\$50	\$50	4				
24D 15906	Provide a compliant shower seat. ICC / ANSI 608.4, 610 <i>Photo 4.</i>	1	\$750	\$750	4				
24E 15907	Provide a compliant hand-held shower unit. ICC / ANSI 608.5, 608.6 <i>Photo 4.</i>	1	\$475	\$475	4				
24I 15908	Install compliant shower grab bars. ICC / ANSI 608.3.1 <i>Photo 4.</i>	1	\$400	\$400	4				
				<i>Location Subtotal:</i>					\$3,775
									<b>Priority # 4 Total \$16,500</b>

Transition Plan - (location/priority)

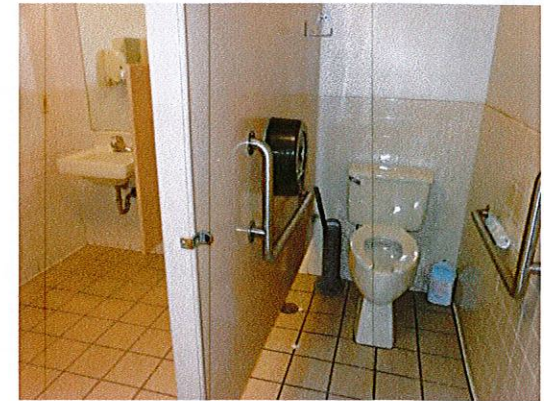




**Photo 1:** Enlarge the concrete pad to provide maneuvering clearance at the main entry.



**Photo 2:** View of kitchenette (no range provided). The sink and counters are at 34". *This is a good example of accessibility.*



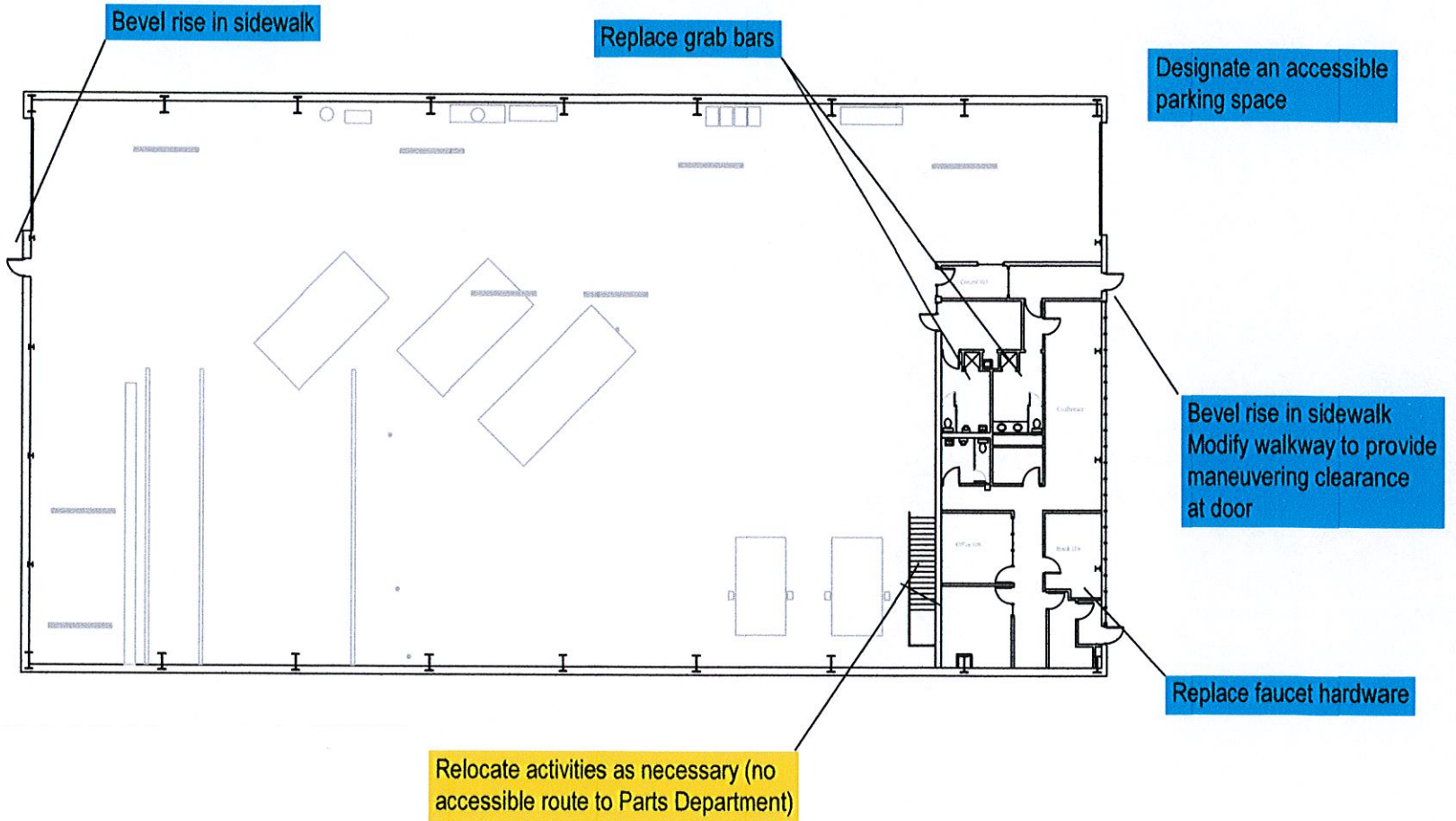
**Photo 3:** View of toilet room. An ambulatory accessible stall is provided, but not a 60" stall.



**Photo 4:** View of shower. The shower does not currently provide seat, grab bars or hand held shower wand.

Building Wide

Replace knob style door hardware



julee quarve-peterson, inc.  
6345 vincent ave s  
minneapolis, mn 55423  
jqp\_inc@yahoo.com

Fleet Services

City of Duluth, MN

2013