



FOR IMMEDIATE RELEASE
City of Duluth Communications Office

411 West First Street, Duluth, Minnesota 55802
218-730-5230 | www.duluthmn.gov | Don Ness, Mayor

For more information contact Pakou Ly, Public Information Coordinator 218-730-5309
or Amy Norris, Public Information Coordinator 218-730-4312

DATE: 03/04/2014
SUBJECT: 1% for the Arts Project at Spirit Mountain Web Link
BY: Amy Norris, Public Information Coordinator

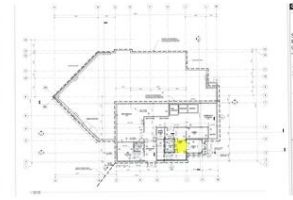
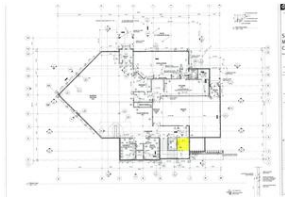
One (1%) for the Arts Project at Spirit Mountain Web Link

On behalf of the City of Duluth, the Duluth Public Arts Commission is soliciting qualifications for a 1% for the Arts public art commission at the Spirit Mountain Grand Chalet, Duluth MN. The Request for Proposal deadl PM, Tuesday, March 25th, 2014. This is the link to the RFP, photos of the location and architectural drawings of the location.

http://www.duluthgov.info/Purchasing/Bid_Files/CURRENT/CURR-14-04DS%20RFO%20for%20Spirit%20Mountain%20Recreation%20Area%20Public%20Arts%20Commission/RFO%20Spirit%20Mountain%20Public%20Ar

Spirit Mountain Grand Chalet

The ski area was founded by The City of Duluth and was built in 1974. With a vertical elevation of approximately 700 feet, it is the second tallest ski hill in Minnesota. In addition to skiing Spirit Mountain has opened up th downhill mountain biking in the off-season. With professionally designed flow trails, Duluth now has the only true downhill lift access biking in the Midwest. They added the only Midwest alpine coaster too, and a Zipline. the adventure opportunities it now offers, Spirit Mountain has a rich history of indigenous people and early pioneers. Constructed in 2013, the Grand Chalet at the base of Spirit Mountain includes a year-round restaurant kn Riverside Bar & Grill, the location for this 1% for the Arts.



ine is 2:00

[1%20Draft.pdf](#)

ie lifts for
In addition to
own as the