



City of Duluth Communications Office

Mayor Emily Larson
411 West First Street • Duluth, Minnesota 55802 • www.duluthmn.gov

For more information contact *Kate Van Daele*,
Public Information Officer at 218-730-5309

DATE: 10/26/2020

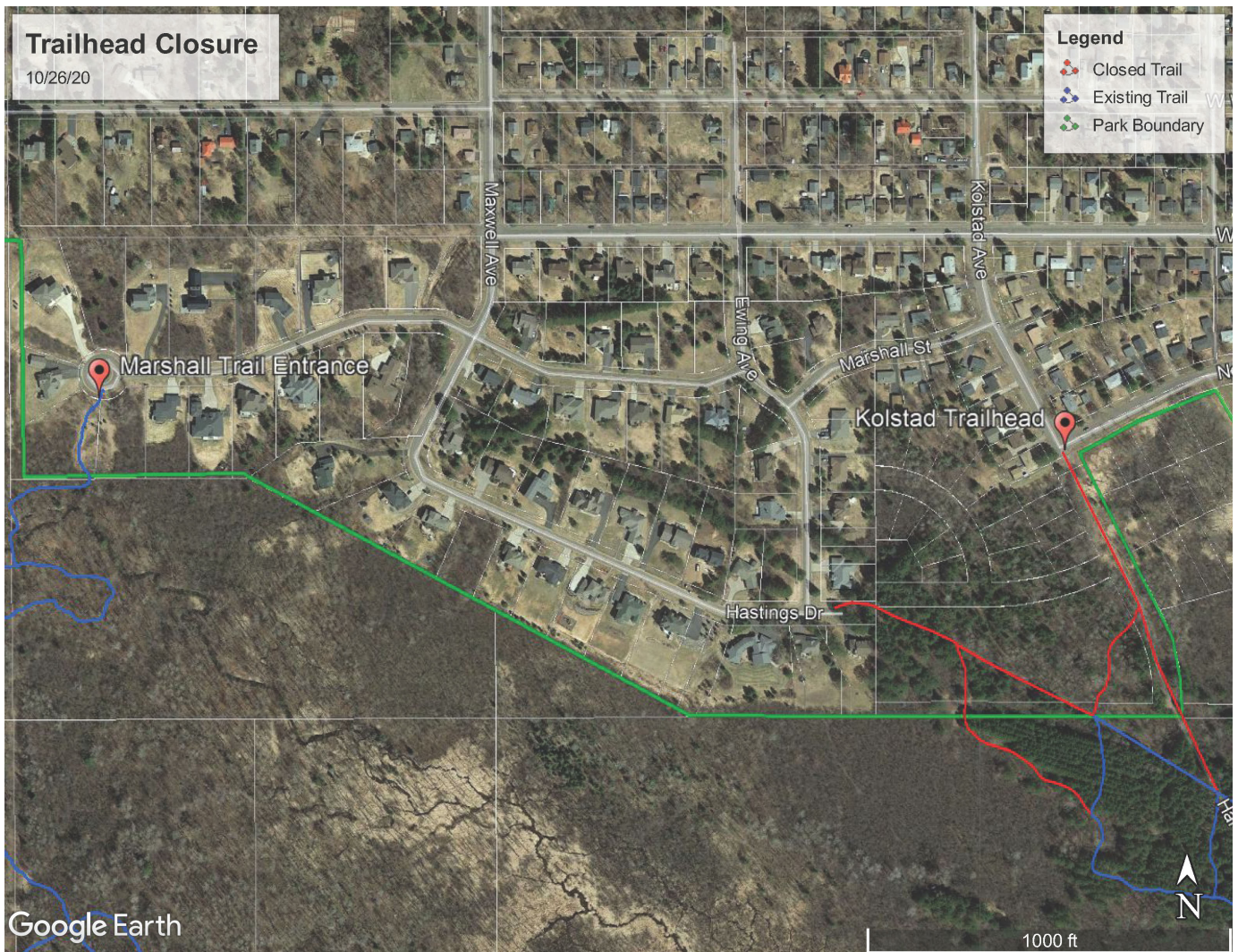
SUBJECT: Hartley Park Trailhead Entrance on Kolstad Avenue Closed

BY: Kate Van Daele, Public Information Officer

Hartley Park Trailhead Entrance on Kolstad Avenue Closed

[Duluth, MN] The trailhead entrance on Kolstad Avenue and the associated trails leading into Hartley Park has been temporarily closed due to the construction of a housing development project in the area. Park users can access Hartley Park at the Marshall Street trailhead or the main parking lot located at 3001 Woodland Avenue. The trail entrance will reopen after construction is complete.

###



Kolstad Avenue Map